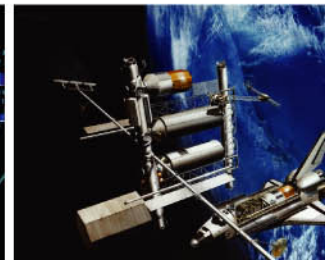
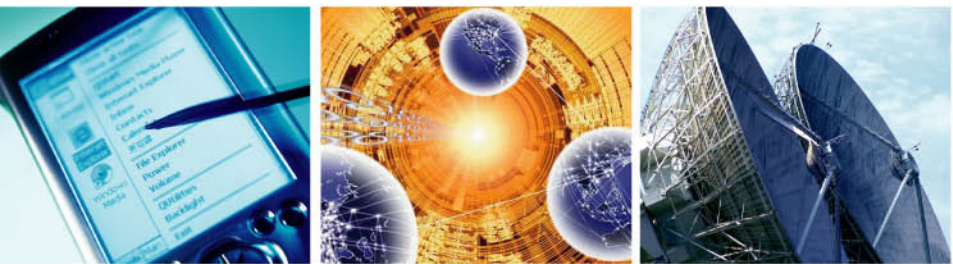


Cable Code

Code		Cable	Center conductor Φ (mm)	Dielectric Φ (mm)	Screen Φ (mm)	Jacket Φ (mm)	Crimp die hex (mm)	Impedance (ohm)	Recommend retention force (N)	Screen type	Recommend frequency range (GHz)
Semi-rigid / flexible cable	1	UT47	0.29	0.94	1.19				41.8	solid tube	95
		Belden1674A	0.28	0.85	1.19			50ohm	26.1	copper-tin braid tube	
		Sucoform47_PE	0.31	0.94	1.19	1.7			26.1	copper-tin braid tube	
	2	UT85	0.51	1.68	2.2				158.5	solid tube	52
		RG405/U	0.51	1.68	2.2			50ohm	100	copper-tin braid tube	
		Flexiform405	0.51	1.70	2.2	2.6/3.2			100	copper-tin braid tube	
	3	UT141	0.92	2.98	3.58				309.1	solid tube	29
		RG402/U	0.91	3.02	3.58			50ohm	197.8	copper-tin braid tube	
		Flexiform402	0.92	3.00	3.60	4.1/4.6			197.8	copper-tin braid tube	
	4	UT250	1.63	5.31	6.35				952.4	solid	19
		RG401/U	1.64	5.46	6.35			50ohm	565	copper-tin braid	
		Flexiform401	1.60	5.30	6.40	7.2/7.6			565	copper-tin braid	
<hr/>											
Code	cable	Center conductor Φ (mm)	dielectric Φ (mm)	screen Φ (mm)	jacket Φ (mm)	Crimp die hex (mm)	Impedance (ohm)	Recommend retention force (N)	Screen type	Recommend frequency range (GHz)	
flexible cable	5	RG178B/U RG196A/U	7x0.1/0.3 7x0.1/0.3	0.83 0.83	1.33 1.33	1.80 1.83	2.67	50ohm	32.7	single	3
	6	RG174/U	7x0.16/0.48	1.5	2.00	2.55			43.5		1
		RG188A/U	7x0.18/0.54	1.55	2.00	2.60	3.25	50ohm	54.4	single	3
		RG316/U	7x0.18/0.54	1.54	2.00	2.50			54.4		3
	7	RG316D/U	7x0.18/0.54	1.54	2.50	3.10	3.25	50ohm	108.8	double	3
	8	RG58C/U	19x0.18/0.90	2.95	3.60	4.95			128.7		1
		RG141A/U	0.91	2.95	3.45	4.83	5.41	50ohm		single	8
		RG303/U	0.95	2.95	3.60	4.30			128.7		3
	9	RG142B/U	0.95	2.95	4.25	4.95					8
		RG223/U	0.89	2.95	4.25	5.40	5.41	50ohm	257.5	double	12.4
		RG400/U	19x0.19/1.00	2.95	4.25	4.95					12.4
	10	RG212/U	1.40	4.70	6.20	8.45	8.65	50ohm	440.8	double	5
	11	RG165/U	7x0.82/2.46	7.25	8.00	10.30			250.7		2.5
		RG8A/U	7x0.72/2.17	7.24	8.13	10.29	10.90	50ohm	423.1	single	2.5
		RG213/U	7x0.75/2.25	7.25	8.10	10.30			423.1		1
	12	RG214/U	7x0.75/2.25	7.28	8.70	10.80			477.5		11
		RG225/U	7x0.79/2.37	7.25	8.75	10.90	10.90	50ohm	553.7	double	5
		RG393/U	7x0.79/2.37	7.25	8.75	9.90			477.5		11
	13	RG217/U	2.70	9.40	11.20	13.85		50ohm	952	double	5
14	RG218/U	5.00	17.30	18.55	22.10		50ohm	1377.3	single	2.5	
15	RG179B/U	7x0.1/0.3	1.53	2.00	2.54						
	RG187A/U	7x0.1/0.3	1.53	2.00	2.65	3.25	75ohm	54.4	Single	1	
16	RG59B/U	0.58	3.64	4.50	6.10		75ohm	171.4			
	RG62C/U	0.62	3.70	4.40	6.10	6.50	93ohm	171.4	single	1	
	RG302	0.64	3.70	4.30	5.10		75ohm	128.7			
17	RG6 A/U	0.73	4.80	6.20	8.45	8.65	75ohm	440.8	double	2	
18	RG11 A/U	7x0.4/1.2	7.25	8.15	10.3	10.9	75ohm	423.1	single	1	
19	RG216 /U	7x0.4/1.2	7.25	8.75	10.8	10.9	75ohm	587.7	double	5	





Cross Reference: SFF VS. RG Cables

SFF cable	RG cable	Impedance (ohm)	Center conductor Φ (mm)	Dielectric Φ (mm)	Jacket Φ (mm)	Attenuation (dB/m)		Weight (kg/km)	Temperature range $^{\circ}\text{C}$
						0.2GHz	3GHz		
SFF-50-1	RG178B/U	50	7×0.09/0.27	0.87	1.80	0.66	3.4	7.510	-55~200
SFF-50-1.5-1	RG316/U	50	7×0.18/0.54	1.50	2.55	0.39	2	16.00	-55~200
SFF-50-1.5-2	RG316D/U	50	7×0.18/0.54	1.50	3.20	0.39	2	28.00	-55~200
SFF-50-2-1		50	0.73	2.20	3.30	0.24	1.27	26.30	-55~200
SFF-50-2-2		50	0.73	2.20	4.00	0.24	1.27	44.40	-55~200
SFF-50-3-1	RG303/U	50	0.93	3.00	4.50	0.18	0.95	50.40	-55~200
SFF-50-3-2	RG142B/U	50	0.93	3.00	5.50	0.18	0.95	79.40	-55~200
SFF-50-5		50	1.48	4.60	6.40	0.12	0.67	86.90	-55~200
SFF-50-7-2	RG393/U	50	7×0.82/2.46	7.25	10.20	0.10	0.52	235.0	-55~200
SFF-75-1		75	0.17	0.87	1.80	0.57	2.90	7.280	-55~200
SFF-75-1.5-1	RG179B/U	75	7×0.1/0.30	1.50	2.55	0.39	2	15.20	-55~200
SFF-75-1.5-2	RG179D/U	75	7×0.1/0.30	1.50	3.20	0.39	2	27.20	-55~200
SFF-75-3-1		75	0.55	3.00	4.50	0.18	0.95	47.40	-55~200
SFF-75-3-2		75	0.55	3.00	5.50	0.18	0.95	76.50	-55~200
SFF-75-5		75	0.82	4.60	6.40	0.12	0.66	88.50	-55~200

Cross Reference: SYV VS. RG Cables

SYV cable	RG cable	Impedance (ohm)	Center conductor Φ (mm)	Dielectric Φ (mm)	Jacket Φ (mm)	Attenuation (dB/m)		Temperature range $^{\circ}\text{C}$
						0.2GHz	3GHz	
SYV-50-1		50	7×0.09/0.27	0.87	1.90	--	--	-40~70
SYV-50-2-1	RG174/U	50	7×0.18/0.54	1.50	2.80	0.45	2.70	-40~70
SYV-50-2-2		50	7×0.18/0.54	2.20	4.00	--	--	-40~70
SYV-50-3-1	RG58C/U	50	0.90	2.95	5.00	0.22	1.48	-40~70
SYV-50-3-2	RG223/U	50	7×0.32/0.96	3.00	5.30	--	--	
SYV-50-5-1		50	1.40	4.80	7.20	0.15	1.06	-40~70
SYV-50-5-4	RG212	50	1.40	4.80	8.00	--	--	-40~70
SYV-50-7-2	RG213	50	7×0.75/2.25	7.25	10.30	0.11	0.85	-40~70
SYV-50-9	RG217	50	2.9	9.70	13.10	0.10	0.72	-40~70
SYV-75-2		75	7×0.08/0.24	1.50	2.90	0.58	2.96	-40~70
SYV-75-3		75	7×0.17/0.51	2.95	5.00	0.28	1.68	-40~70
SYV-75-5	RG6A/U	75	0.75	4.80	7.20	0.15	1.03	-40~70
SYV-75-7	RG11A/U	75	7×0.40/1.20	7.25	10.30	0.12	0.86	-40~70
SYV-75-9		75	1.37	9.00	12.20	0.09	0.69	-40~70
SYV-75-17		75	7×0.95/2.85	17.30	22.00	0.06	0.54	-40~70