

Description

MCX connectors offer an excellent combination of performance, size, and weight. It have a same design of center contact and insulator support as SMB, but the optimized outer contact and locking system make the 30% reduction of mounting space.

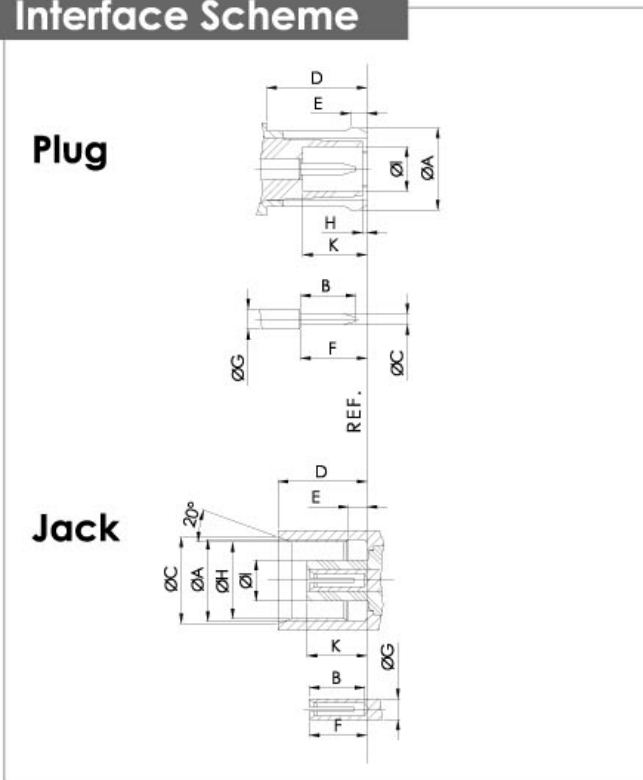
They operate to a higher frequency than SMB (6GHz compared to 4GHz). The applications where performance is critical and space is limited is preferred.

Zeeteq MCX connectors comply with IEC 60169-36, They are readily available for flexible and semi-rigid cables.

Configuration

plug straight cable connector.....	35
plug right angle cable connector.....	36
jack straight bulkhead connector.....	37
jack straight cable connector.....	38
jack right angle cable connector.....	39
flange receptacle.....	40
Bulkhead receptacle.....	40
press-in receptacle.....	40
PCB mount receptacle.....	41

Interface Scheme



Interface Dimensions

	Plug		Jack		
	min.	max.	min.	max.	
A	3.72	3.80	3.60	3.70	A
B	2.49	2.59	2.80	-	B
C	0.48	0.53	3.80	-	C
D	4.15	-	4.00	4.12	D
E	0.70	0.75	0.75	0.85	E
F	2.80	3.20	2.30	2.80	F
G	0.95 nom.		0.95 nom.		G
H	0	0.30	3.42	3.48	H
I	2.00	2.07	1.80	1.98	I
K	2.80	3.20	2.60	2.80	K

SPECIFICATION

ELECTRICAL DATA

Impedance	50Ω
Frequency range	DC-6GHz
RF leakage @ 1GHz -flexible cable -semi-rigid cable	≥ 60dB ≥ 70dB
Dielectric withstanding voltage(sea level, in Vrms,50Hz)	≥ 750
Working voltage(at sea level, in Vrms,50Hz)	≤ 170
Insulation resistance	≥ 1000MΩ
Contact resistance -center contact -outer contact	≤ 5.0mΩ ≤ 2.5mΩ

MECHANICAL DATA

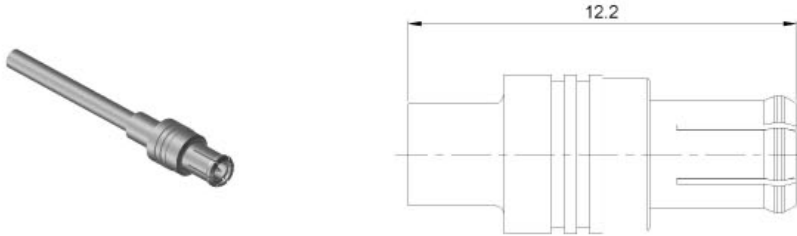
Engagement force	≤ 25N
Disengagement force	8-20N
Contact captivation	≥ 10N
Durability(matings)	≥ 500

Temperature range	-55°C- +155°C
Climatic category	IEC 55/155/21
Thermal shock	MIL-STD-202,Method 107, Condition B
Moisture resistance	MIL-STD-202,Method 106
Corrosion	MIL-STD-202,Method 101, Condition B
Vibration	MIL-STD-202,Method 204, Condition D
High temperature endurance test	MIL-STD-202,Method 108A, Condition D

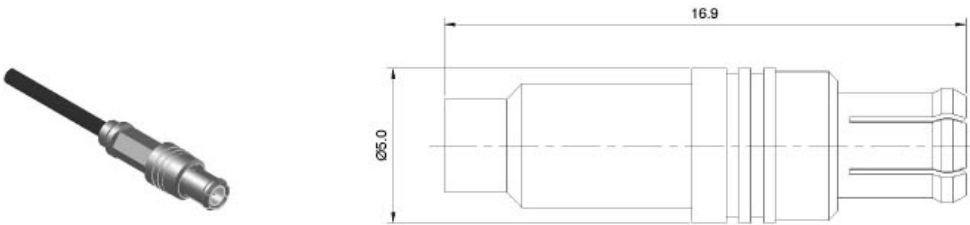
MATERIAL DATA

PART	MATERIAL	PLATING
Body, pin contact	Brass	Gold
Socket contact	Beryllium copper	Gold
Ferrule	Copper Brass	Gold
Outer contact -Plug -Jack	Beryllium copper Brass	Gold Gold
Insulator	PTFE	
Gasket	Silicone rubber	

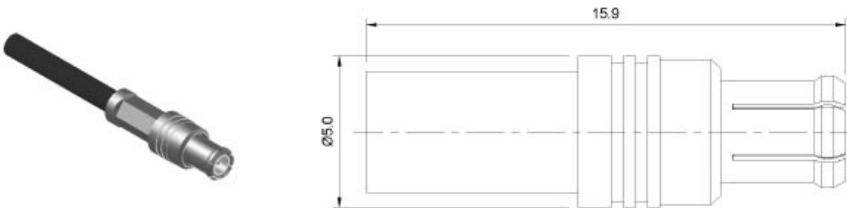
PLUG STRAIGHT CABLE CONNECTORS



Part number	Cable code	Cable	Center contact	Outer contact	Body plating
5091.MCX.PSC.02.111	02	UT85 RG405	solder	solder	gold

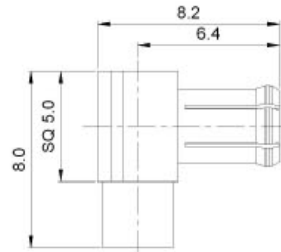


Part number	Cable code	Cable	Center contact	Outer contact	Body plating
5092.MCX.PSC.05.111	05	RG178 RG196	solder	crimp	gold

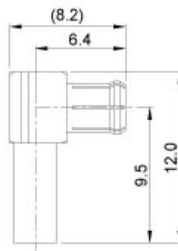


Part number	Cable code	Cable	Center contact	Outer contact	Body plating
5093.MCX.PSC.06.111	06	RG174 RG188 RG316	solder	crimp	gold
5094.MCX.PSC.07.111	07	RG316D	solder	crimp	gold

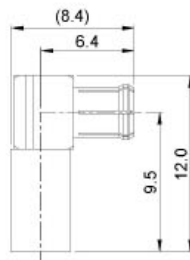
PLUG RIGHT ANGLE CABLE CONNECTORS



Part number	Cable code	Cable	Center contact	Outer contact	Body plating
5095.MCX.PRC.02.111	02	UT85 RG405	solder	solder	gold

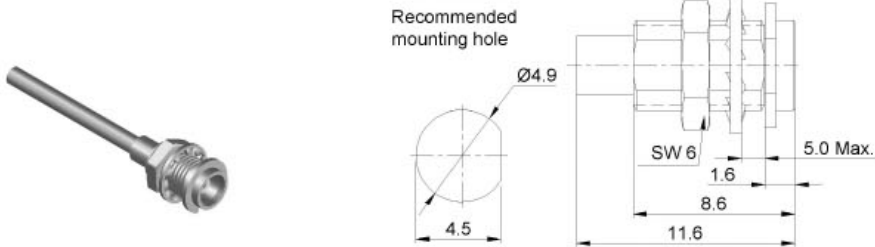


Part number	Cable code	Cable	Center contact	Outer contact	Body plating
5096.MCX.PRC.05.111	05	RG178 RG196	solder	crimp	gold

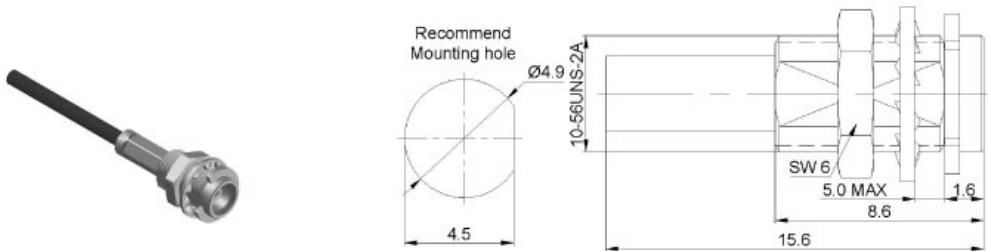


Part number	Cable code	Cable	Center contact	Outer contact	Body plating
5097.MCX.PRC.06.111	06	RG174 RG188 RG316	solder	crimp	gold
5098.MCX.PRC.07.111	07	RG316D	solder	crimp	gold

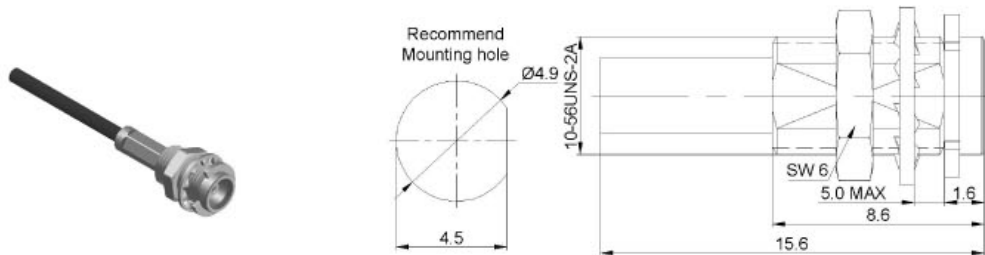
JACK STRAIGHT BULKHEAD CABLE CONNECTORS



Part number	Cable code	Cable	Center contact	Outer contact	Body plating
5099.MCX.JSC.02.111	02	UT85 RG405	solder	solder	gold

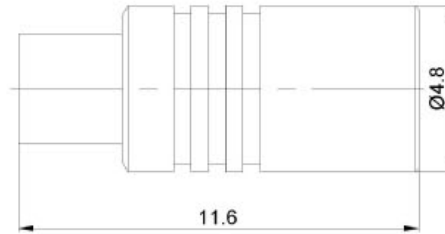


Part number	Cable code	Cable	Center contact	Outer contact	Body plating
5100.MCX.JSC.05.111	05	RG178 RG196	solder	crimp	gold

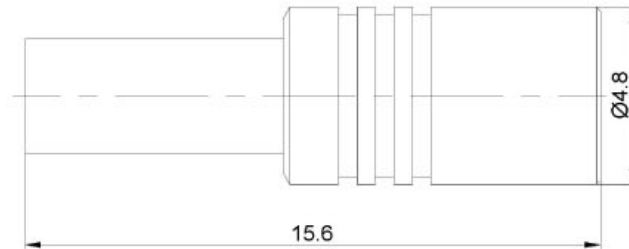


Part number	Cable code	Cable	Center contact	Outer contact	Body plating
5101.MCX.JSC.06.111	06	RG174 RG188 RG316	solder	crimp	gold
5102.MCX.JSC.07.111	07	RG316D	solder	crimp	gold

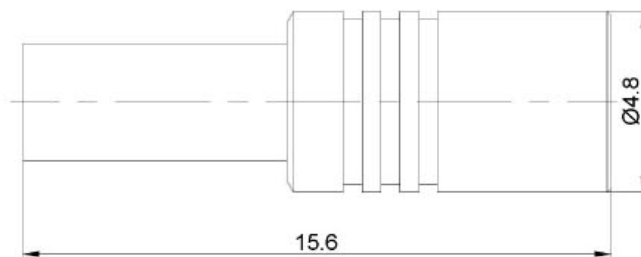
JACK STRAIGHT CABLE CONNECTORS



Part number	Cable code	Cable	Center contact	Outer contact	Body plating
5234.MCX.JSC.02.111	02	UT85 RG405	solder	solder	gold

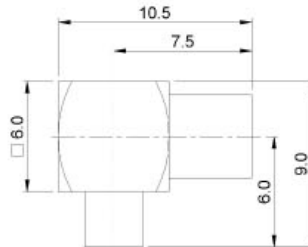


Part number	Cable code	Cable	Center contact	Outer contact	Body plating
5235.MCX.JSC.05.111	05	RG178 RG196	solder	crimp	gold

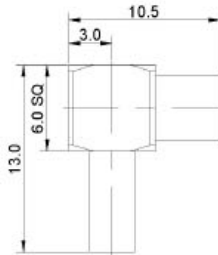


Part number	Cable code	Cable	Center contact	Outer contact	Body plating
5236.MCX.JSC.06.111	06	RG174 RG188 RG316	solder	crimp	gold
5237.MCX.JSC.07.111	07	RG316D	solder	crimp	gold

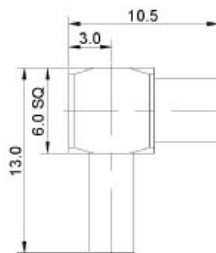
JACK RIGHT ANGLE CABLE CONNECTORS



Part number	Cable code	Cable	Center contact	Outer contact	Body plating
5103.MCX.JRC.02.111	02	UT85 RG405	solder	solder	gold

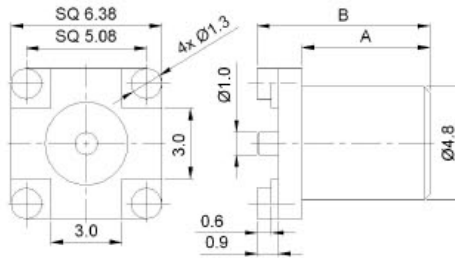


Part number	Cable code	Cable	Center contact	contact	Body plating
5104.MCX.JRC.05.111	05	RG178 RG196	solder	crimp	gold

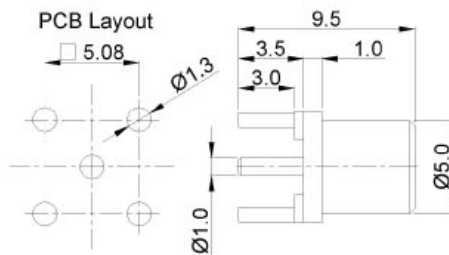


Part number	Cable code	Cable	Center contact	Outer contact	Body plating
5105.MCX.JRC.06.111	06	RG174 RG188 RG316	solder	crimp	gold
5106.MCX.JRC.07.111	07	RG316D	solder	crimp	gold

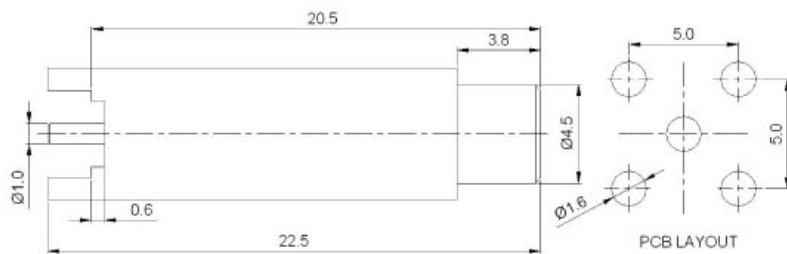
PCB MOUNT RECEPTACLES



Part number	Center contact	A	B	Body plating	Notes
6118.MCX.JSS.00.110	surface mount	5.4	7.3	gold	surface mount
6141.MCX.JSS.00.110	surface mount	7.4	9.3	gold	surface mount

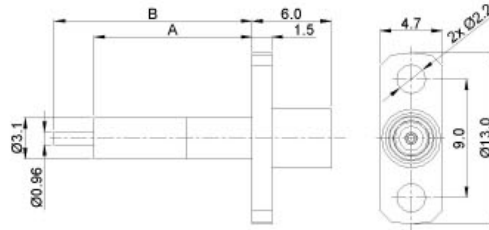


Part number	Center contact	Body plating	Notes
6091.MCX.JST.00.110	through hole	gold	flush dielectric



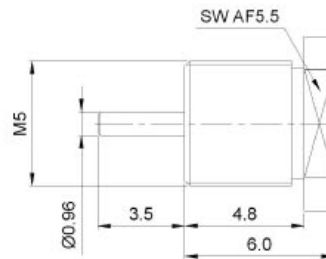
Part number	Center contact	Body plating	Notes
6151.MCX.JST.00.110	through hole	gold	flush dielectric

FLANGE MOUNT RECEPTACLES



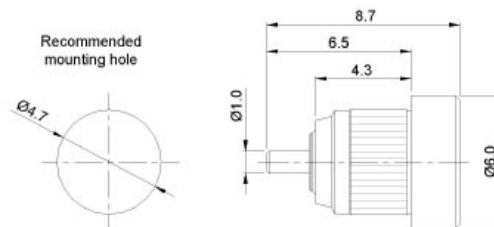
Part number	Center contact	A	B	Body plating	Notes
6016.MCX.JSF.00.110	coaxial rod	12	15	gold	extended dielectric
6017.MCX.JSF.00.110	coaxial rod	16	19	gold	extended dielectric
6018.MCX.JSF.00.110	coaxial rod	27.5	30.5	gold	extended dielectric

BULKHEAD RECEPTACLES



Part number	Center contact	Body plating	Notes
6092.MCX.JSB.00.110	coaxial rod	gold	flush dielectric

PRESS-IN RECEPTACLES



Part number	Center contact	Body plating	Notes
6131.MCX.JSP.00.110	coaxial rod	gold	flush dielectric