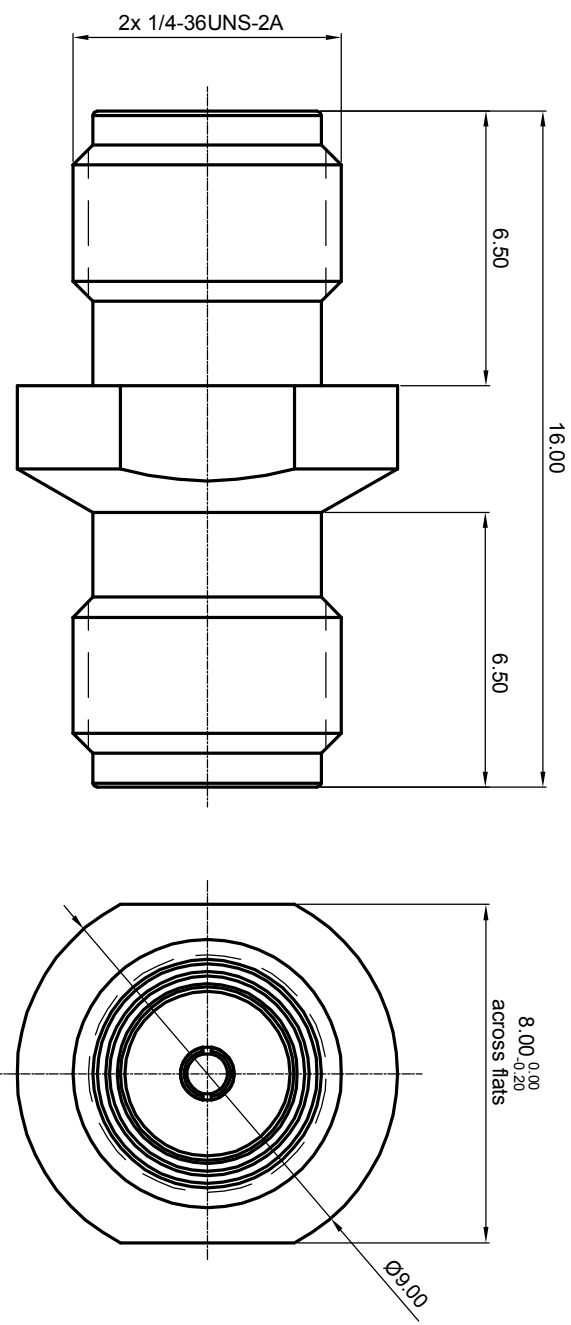

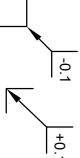


- NOTES: (UNLESS OTHERWISE SPECIFIED)**
- Interface comply with IEC169-15.
 - Part must be packaged to avoid any damages during transportation.



REV.	DESCRIPTION	APPROVED	DATE	ECN

MATERIAL see bom		TOLERANCES 0place X ±1 1place X ±0.1 2place .XX ±0.05 Angle ±5°		THIRD ANGLE PROJECTION 		TITLE Zeeteq Adaptor, SMA jack-SMA jack	
FINISH see bom		Remove burrs and sharp edges 		GENERAL ECCENTRICITY <input checked="" type="checkbox"/> 0.06		DWG NO. A5023.SMAJSMAJ	
Plating part to be touched by gloves Dimension apply before plating XXX - measuring point for plating		DRAWN BY Joy Zhou		DATE 09Jan08		REV. S1	
SURFACE		VOLUME		NOTICE: Those drawings and specifications are the property of ZEETEQ CORPORATION and used only for the specify purpose authorised by ZEETEQ		SCALE 8:1	
SURFACE		VOLUME		DO NOT SCALE DRAWING		SIZE A4	
SURFACE		VOLUME		DO NOT SCALE DRAWING		SHEET 1 of 1	

1.6x