

## Description

Cable terminals offer a fast, cost efficient, low profile solution for connection between the circuit and cable. Its operating frequency range is determined by the cable to which the terminals attached and the dimensions of the terminal.

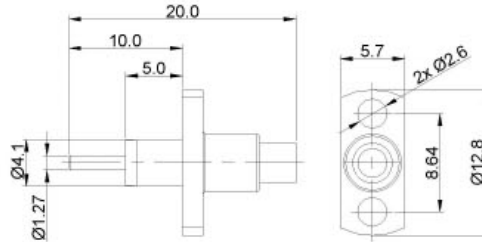
They are usually applied in limited space applications.

However, obviously, once they are mounted, the maintenance become inconvenient.

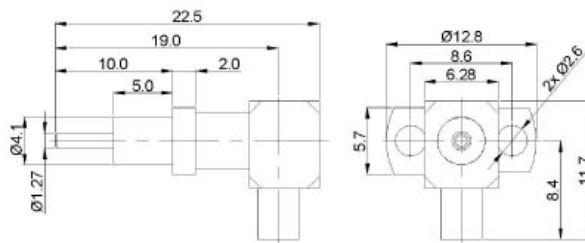
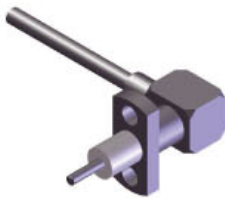
## Configuration

Flange terminal.....	122
Bulkhead terminal.....	123

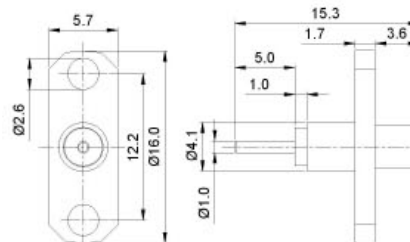
## FLANGE TERMINALS



Part number	Cable code	Cable	Center contact	Outer contact	Body plating
6014.TMN.OSC.02.110	02	UT86 RG405	solder	solder	gold

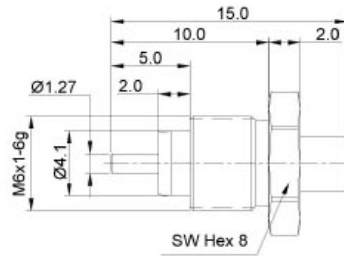


Part number	Cable code	Cable	Center contact	Outer contact	Body plating
6013.TMN.ORG.02.110	02	UT86 RG405	solder	solder	gold



Part number	Cable code	Cable	Center contact	Outer contact	Body plating
6022.TMN.OSC.02.110	02	UT86 RG405	solder	solder	gold

## BULKHEAD TERMINALS



Part number	Cable code	Cable	Center contact	Outer contact	Body plating
6062.TMN.OSC.02.110	02	UT86 RG405	solder	solder	gold